



Beverley War Memorial Hall NEWSLETTER



www.beverleymemorialhall.org

Plans passed for revamp of Beverley War Memorial Hall

Remembering the words of the late Lord Middleton when in 1959 he opened the Beverley War Memorial Hall, the present day Trustees of the hall are delighted to be reminded of them now as plans have been passed for the refurbishment of the hall.

Lord Middleton said on that occasion: *“It only remains for the people of Beverley and district to make good use of this splendid hall for it is intended to provide for all kinds of community activities”*.

Now the tired old building that has been used by the local communities since his comments all those years ago is, to be refurbished through grants and loans and fund raising activities by the Trustees and local organisations, at a cost of £1.4m to provide state-of-the-art facilities for the community of Beverley and surrounding villages.

Trustees delighted after thirteen years of fund raising

The Trustees of the Beverley War Memorial Hall, who have worked for nine years to achieve funding for the refurbishment of the hall, are delighted that 2010 will see the work get underway. It is expected to take ten months.

The Trustees, who are all volunteers who have given their time and expertise free, come from many walks of life to bring this about. They are already making plans for the type of activities and events that will do justice to the refurbished building.

Under manager Annette Bedford, staffing levels are already being looked at and bar and catering facilities are eagerly being discussed.

The Trustees are grateful for the help and support of local organisations including The Friends of Beverley War Memorial Hall, the Beverley Leisure Group, Vista and others who have helped raise not only funds but the awareness of the need to refurbish the hall.

Andrew Eastwood, the chairman of the Trustees says: *“These are exciting times now that the plans have been finalised and passed. We have some way to go yet including seeking tenders from builders for the work to start, but already we are sitting down planning the reopening and programmes for the future..”*

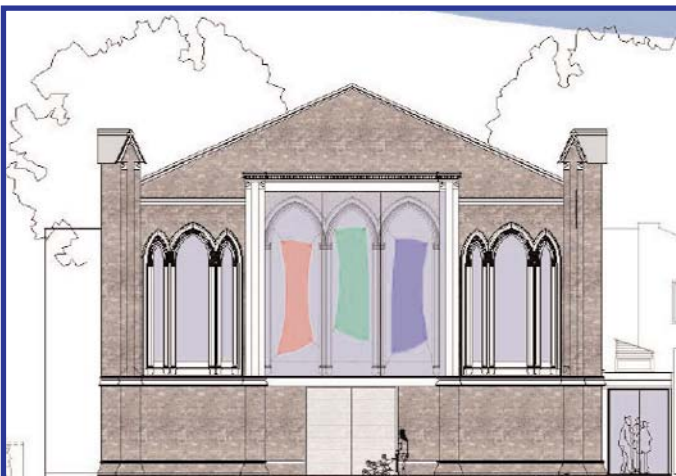
He went on to say: *“We are particularly excited by the fact that the new main entrance will be from Champney Gardens, which will give us access for parking in the library car park in the evenings. This will make a tremendous difference to access to the hall and Champney Gardens for patrons.”*



The picture shows the existing entrance to the Beverley War Memorial Hall which will become the ‘stage door’ entrance leading to a newly positioned stage. The main entrance to the building will be through Champney Road Gardens.



Artist’s impression of the front of the refurbished Beverley War Memorial Hall from Champney Road Gardens.



An artist’s impression of the stage door entrance in Lairgate, formerly the main entrance.

This is a very exciting time for the Hall. This summer the doors will close and rebuilding work will begin to provide a refurbished hall, an excellent multi-purpose venue fit for the 21st Century and a continuing tribute to those of the Armed Forces of Beverley who sacrificed so much.

'The Friends of Beverley Memorial Hall'

The Friends of Beverley Memorial Hall are a group of volunteers who believe the hall is a great resource for the residents of Beverley and the surrounding villages.

With this in mind they have, over a number of years, supported the efforts of the Trustees by fund raising activities to make sure it continues to be a busy and vibrant community centre, where everyone can enjoy a wide range of events and activities, for a long time to come. In addition to holding their own events they provide a pool of people who are willing to assist with the smooth running of the hall. The licensed bar is staffed entirely by volunteers from the Friends. They also assist by stewarding, manning the Box Office, assisting with kitchen duties, giving out programmes, distributing publicity material, etc. In fact they do whatever they can to lend a hand by donating their time.

Be an *ANGEL* TODAY!

The £1.4m renovation of the Beverley War Memorial Hall will be starting in the spring of 2010 using grants and loans the East Riding County Council, the Beverley Town Council and fund raising activities from local organisations including the Friends of the Beverley War Memorial Hall, and the Trustees.

However, to ensure the refurbishment is finished to a high standard, the Trustees need to raise additional funds to provide value for a vibrant community and arts centre for the enjoyment of the whole community. Equipment will be required for catering facilities for dances, films, meetings, festivals, bands, theatre productions, wedding receptions and many other activities.

To help the trustees achieve this we invite readers to become an '*ANGEL*' by making a donation towards the refurbishment of the hall - however big or small - to help fill a funding gap.

Donations of £25 or more will be acknowledged on a special funding honours board to be mounted in the hall on completion.

In addition donations of more than £250 will be acknowledged with a small plaque on a seat in the new 300-seater auditorium with the name of the 'Angel' or a loved one on it.

Please send your donations to:-

The Manager, Beverley War Memorial Hall, 73-75 Lairgate, Beverley, HU17 8HN Cheques should be made payable to "*Beverley Memorial Hall Development Fund*" or paid into the *Beverley Building Society, Saturday Market.*

By completing a *Gift Aid Form* your donation can be worth an additional 28p in the £ to the Trust.

Please give generously by completing the form below.



Recent events held in the Beverley War Memorial Hall



Public dances and private functions.



Wedding receptions.

Beverley Memorial Hall Trust An Appeal to Residents

When you receive a News Letter from Beverley Town Council in the near future, please read the questionnaire about the Memorial Hall very carefully.

Please reply to this consultation exercise as it is very important that an accurate assessment of public opinion is obtained so that funding for the refurbishment of the Hall can be sought and the Hall be made 'fit for purpose' for the next 50 years.

The Hall is a dedicated War Memorial as well as being a very important community facility for Beverley.

Your support for this project is vital and very much appreciated by the Trustees.

I wish to be an '*ANGEL*' and donate £..... to the Beverley Memorial Hall Fund. I wish this donation to be *Gift Aided* enabling the Trust to claim a further 28p in the £ from the Inland Revenue.

Name.....

Address.....

Tel.....

Email

Cut out along dotted line.

Tell your friends to sign up for our Newsletters at:-
www.beverlymemorialhall.org.

Or Email us at:-
bevmemhall@bevmemhall.karoo.co.uk